

EasyADC™ System Installation Guide



Intermec Technologies Corporation
Corporate Headquarters
6001 36th Ave. W.
Everett, WA 98203
U.S.A.
www.intermec.com

The information contained herein is proprietary and is provided solely for the purpose of allowing customers to operate and service Intermec-manufactured equipment and is not to be released, reproduced, or used for any other purpose without written permission of Intermec.

Information and specifications contained in this document are subject to change without prior notice and do not represent a commitment on the part of Intermec Technologies Corporation.

© 2004 by Intermec Technologies Corporation. All rights reserved.

The word Intermec, the Intermec logo, Norand, ArciTech, CrossBar, Data Collection Browser, dcBrowser, Duratherm, EasyCoder, EasyLAN, Enterprise Wireless LAN, EZBuilder, Fingerprint, i-gistics, INCA (under license), InterDriver, Intermec Printer Network Manager, IRL, JANUS, LabelShop, Mobile Framework, MobileLAN, Nor*Ware, Pen*Key, Precision Print, PrintSet, RoutePower, TE 2000, Trakker Antares, UAP, Universal Access Point, and Virtual Wedge are either trademarks or registered trademarks of Intermec Technologies Corporation.

Throughout this manual, trademarked names may be used. Rather than put a trademark (™ or ®) symbol in every occurrence of a trademarked name, we state that we are using the names only in an editorial fashion, and to the benefit of the trademark owner, with no intention of infringement.

Microsoft, Windows, and the Windows logo are registered trademarks of Microsoft Corporation in the United States and/or other countries.

This product includes software developed by the OpenSSL Project for use in the OpenSSL Toolkit. (<http://www.openssl.org/>).

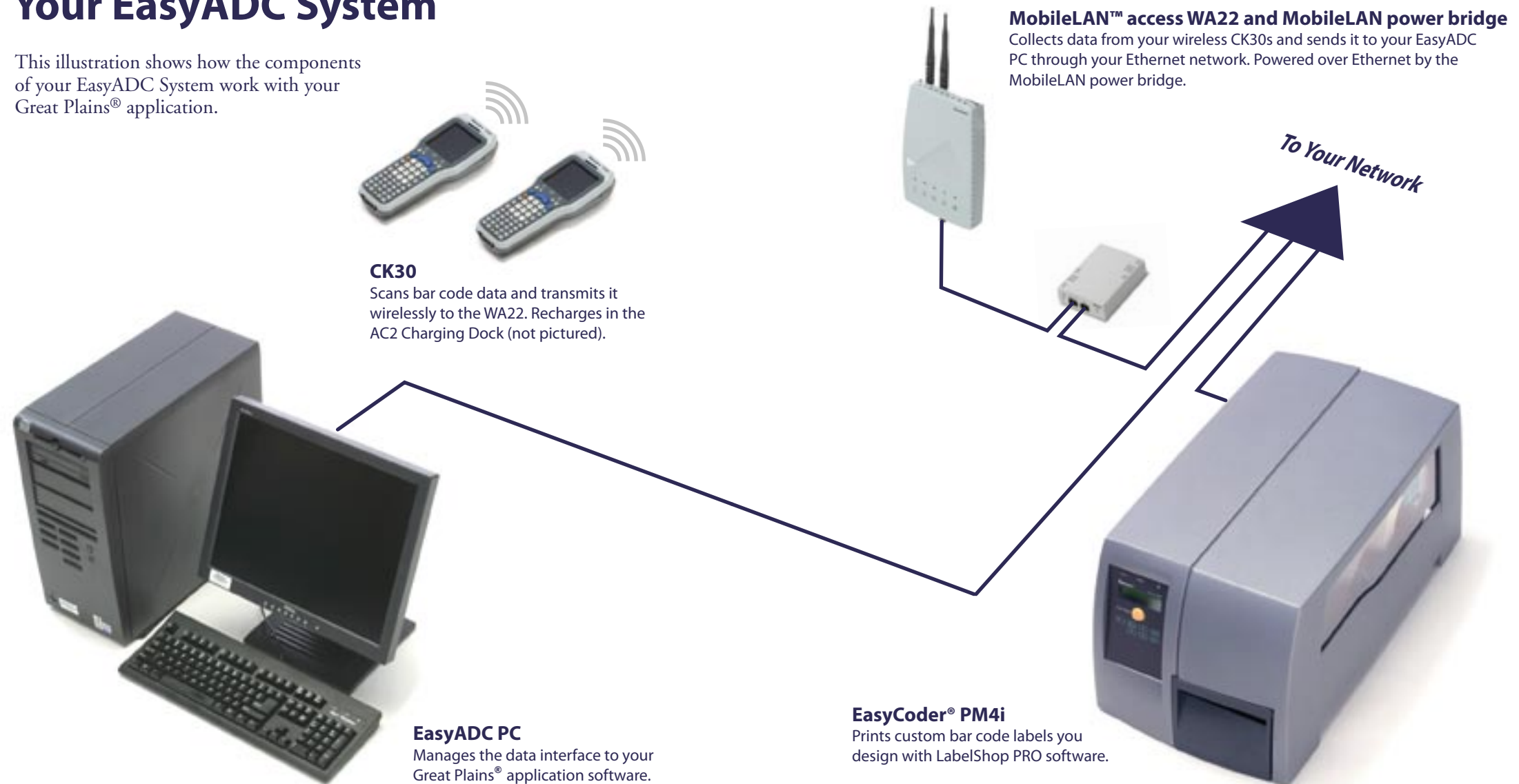
There are U.S. and foreign patents pending.

Contents

Your EasyADC System	4
EasyADC System Requirements	6
Tools and Additional Materials	7
Step 1: Unpacking the EasyADC System	8
Step 2: Installing the WA22	10
Step 3: Installing the Software	14
Step 4: Setting Up the AC2 and CK30s	24
Step 5: Configuring the CK30s	26
Step 6: Installing the PM4i	28
Step 7: Setting Security	40
Using the EasyADC Console	41
Uninstalling the System	42
For More Information	46

Your EasyADC System

This illustration shows how the components of your EasyADC System work with your Great Plains® application.



EasyADC System Requirements

Before you begin installing your EasyADC System, you need these items:

- ☐ Completed Great Plains questionnaire
- ☐ Version number of your Great Plains software
- ☐ Location of your Great Plains client's dex.ini file (typically located at C:/Program Files/Microsoft Business Solutions/Great Plains/dex.ini)
- ☐ Name of and path to your Great Plains server
- ☐ Name of your company database
- ☐ SQL System Administrator password
- ☐ Great Plains user ID and password
- ☐ A range of at least five available IP addresses on your network

You also need to provide a dedicated PC to act as your EasyADC PC. Hardware requirements for the PC are as follows:

- ☐ Windows® XP Professional
- ☐ 2 GHz Pentium 4 or better
- ☐ 512MB RAM
- ☐ 500MB available hard drive space
- ☐ CD-ROM drive
- ☐ An available 100baseTx Ethernet port
- ☐ An available USB port

Additionally, the EasyADC PC must:

- ☐ be running a Microsoft Great Plains client.
- ☐ be connected to your local area network.
- ☐ have a static IP address.

Tools and Additional Materials

You need a Phillips screwdriver to install the handstraps on the CK30s. Other materials you may need include:

- ☐ Ladder to reach the permanent mounting location for the WA22
- ☐ Six mounting screws for the WA22 mounting bracket if you wish to use it. Type and size of the screws depends on the materials at the installation location.
- ☐ Drill and bit
- ☐ Screwdriver for the bracket mounting screws
- ☐ Three Ethernet cables (CAT5). The EasyADC System comes with three 3.05 m (10 ft) Ethernet cables. You need to supply your own cables if you need longer cable runs.

Unpacking the EasyADC System

Use this checklist to verify that you received all the components of your EasyADC System. If anything is missing, contact your Intermec consulting partner.

EasyCoder PM4i IPL Printer

- ☐ PM4i printer
- ☐ Printer accessories box

For a complete list of the Printer accessories box contents, see the *EasyCoder PM4i Bar Code Label Printer User's Guide* in the box.



Media for PM4i

- ☐ 2 rolls 4x6-inch label media
- ☐ 1 roll thermal transfer ribbon



AC2 4-Bay Charging Dock

- ☐ AC2 charging dock
- ☐ Quick start guide

EasyADC System Installation CD



2 CK30 Handheld Computers

- ☐ CK30 computer
- ☐ Rechargeable AB1 battery
- ☐ Packet including documentation and labels

For a complete list of the packet contents, see the *CK30 Handheld Computer Quick Start Guide* in the packet.



MobileLAN access WA22

- ☐ WA22 access point
- ☐ Mounting bracket and hardware
- ☐ Documentation packet

For a complete list of the packet contents, see the *MobileLAN access WA22 Quick Start Guide* in the packet.

Accessories box

Includes the accessories specific to your EasyADC System components. For a complete list, see the *EasyADC Accessories* checklist in the box.



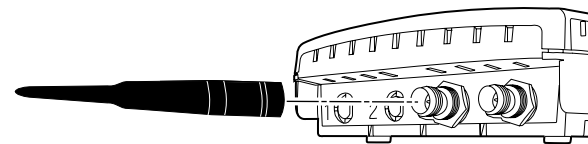
Installing the WA22

Before you perform this step, choose a location for the WA22 based on these guidelines:

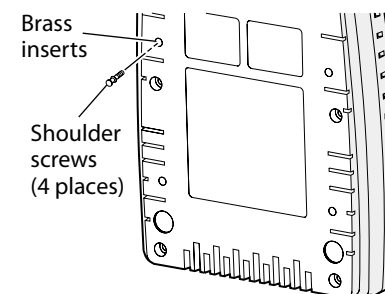
- Place the WA22 horizontally on a desk or counter, or mount it vertically on a wall with the included mounting bracket.
- Mount the WA22 as high as possible (at about two-thirds of the floor-to-ceiling distance), close to the area where the CK30s will be used.
- Keep the WA22 clear of metal surfaces like beams or girders, which may decrease the radio range.
- Keep large quantities of paper products from blocking the line-of-sight between the WA22 and the CK30s, as these products will absorb the radio signals and make communications unreliable.

- 1 Get these items from the Accessories box:
 - MobileLAN power bridge and AC power cord
 - 2 Ethernet cables (Or, your own cables if you need longer than 3.05 m [10 ft])
 - 2 antennas
- 2 On the WA22, remove the antenna port caps and the plastic plug in the Ethernet port.

- 3 Attach both antennas to the WA22. Tighten the nut to finger tightness. If you are not using the mounting bracket, continue with Step 8. To use the mounting bracket, continue with Step 4.



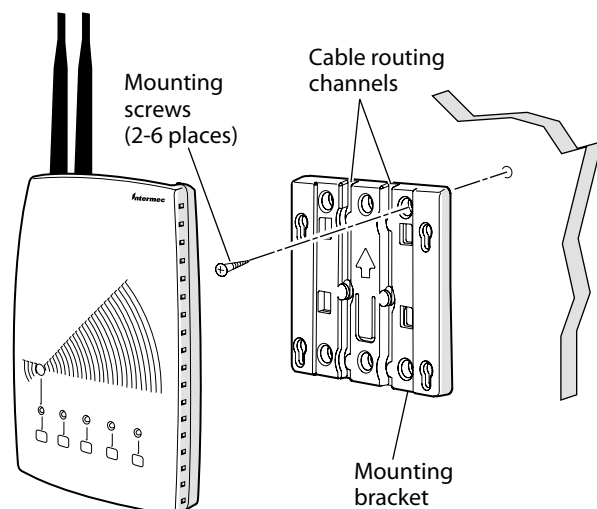
- 4 Insert one shoulder screw into each of the four brass inserts and tighten them securely.



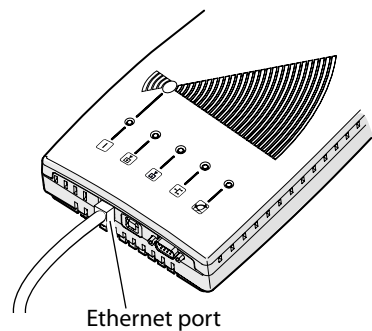
- 5 Using the bracket as a template, mark the mounting hole locations on the mounting surface.

Installing the WA22 (continued)

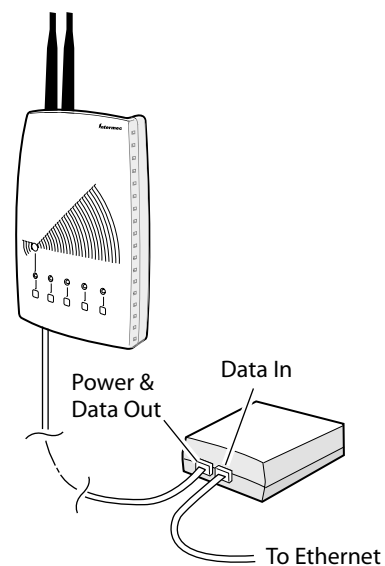
- 6 Route the Ethernet cables through the cable routing channels in the bracket.
- 7 Mount the WA22 in the bracket by inserting the shoulder screws into the keyhole slots in the bracket. Slide the WA22 down until it is firmly seated.



- 8 Connect one Ethernet cable to the WA22 Ethernet port.



- 9 Connect the Ethernet cable from the WA22 to the Power & Data Out port on the power bridge.
- 10 Connect an Ethernet cable from the Data In port on the power bridge to a port on an Ethernet hub or switch connected to your LAN.
- 11 Connect the AC power cord to the power bridge and an AC outlet.

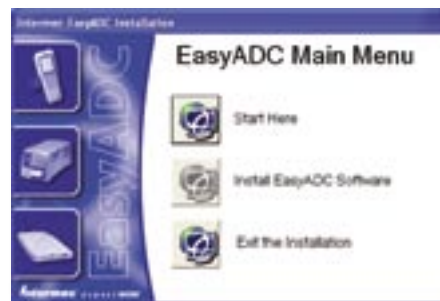


On the WA22, the green Power light turns on and stays solid and the other lights start blinking as the WA22 boots. The blue light turns on and remains on after the WA22 has finished booting.

Installing the Software

- 1 Get the EasyADC CD from the shipping box.
- 2 Insert the EasyADC CD into the CD drive on your designated EasyADC PC. This is the same PC that is currently running the Microsoft Great Plains Client. The installation begins and you are prompted to install components of the Microsoft .NET Compact Framework.
- 3 Follow the onscreen instructions to install .NET components. After this part is complete, you are prompted to install Adobe® Reader®.
- 4 Follow the onscreen instructions to install Adobe Reader. If Reader is already installed on this PC, you will see a screen that offers two choices: Repair or Remove. Choose **Repair** and continue.

After Reader is installed, the EasyADC Main Menu screen appears.



- 5 Click the icon next to “Start Here.” The Getting Started with EasyADC screen appears.

Follow the prompts to learn more about your EasyADC System. In the **Reference** menu, you can find links to PDF files of the user manuals for each component in your system.



When you are ready to continue, click **Return to Installation**. The EasyADC Main Menu appears.

- 6 Click the icon next to “Install EasyADC Software.” The Install Type screen appears.

Make sure that **Server Computer** is selected.



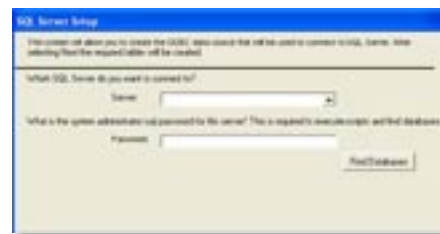
Note: The Optional Monitoring Computer choice is for remote printing. For help with remote printing capability, see your consulting partner. Do not choose this option right now.

Installing the Software (*continued*)

- 7 Click **Next**. A browse screen appears showing the location of the dex.ini file.

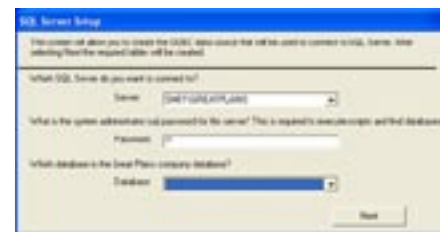


- 8 Click **Open**. Progress screens appear showing you the status of the installation. When this part is done, the SQL Server Setup screen appears.



- 9 Choose your Great Plains server from the Server drop-down list.

- 10 Enter the SQL system administrator password in the Password field and click **Find Databases**. After your password is authenticated, the **Database** drop-down list appears.



- 11 Choose your Great Plains database from the drop-down list and then click **Next**. The Select Version screen appears.



- 12 Make sure the correct version for your current Great Plains installation is selected and then click **Next**. Additional installations begin and a DOS window appears. When this part of the installation is complete, a setup complete message appears.

- 13 Click **OK**. The EasyADC Software Configuration Wizard appears. Do not proceed until "Initialization Complete" appears at the bottom of this screen.



For the next several steps, you need your completed Great Plains questionnaire.

Installing the Software (continued)

- 14 Click the arrow on the lower right side of the screen. The Scan Unit of Measure screen appears.



- 15 Choose **Yes** or **No**, and then click the right arrow to continue to the next screen.



- 16 Continue through each of the software configuration screens to choose settings and enter information from your Great Plains questionnaire. When you click the right arrow in the Great Plains Version screen, the Summary screen appears.

- 17 Click **Save Configuration**. A message box appears asking if you want to exit the application.

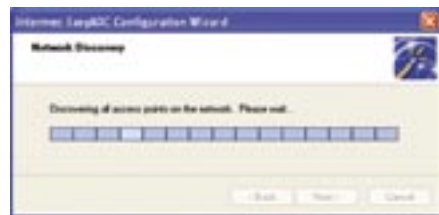


- 18 Click **Yes**. The installation continues and you are prompted to install Wavelink Avalanche.
- 19 Follow the onscreen instructions to install Avalanche and accept default settings. A message appears asking if you want to add a desktop shortcut.
- 20 Click **No**. A dialog box appears asking if you want to launch Avalanche Enabler. Do not choose this option. The installation continues and you are prompted to install LabelShop® PRO 6.
- 21 Follow the onscreen instructions to install LabelShop PRO 6 and accept all default settings. If prompted for a User Name and Company Name, enter the name of your designated EasyADC System leader and your company name.
- 22 Click **Finish**. The EasyADC Configuration Wizard screen appears.



Installing the Software (*continued*)

- 23 Click **Next**. The Network Discovery screen appears as the system looks for the WA22.



When this is complete, the Configure IP Addresses screen appears with the EasyADC PC IP address in the Host IP Address field.

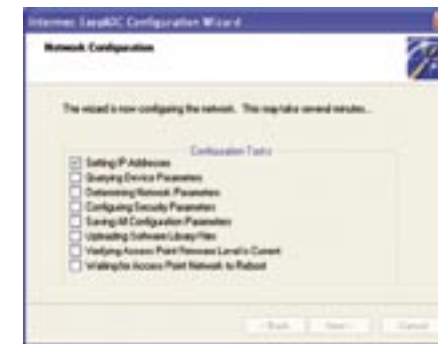


- 24 Enter a range of IP addresses for your EasyADC System.

- 25 Click **Next**. The Network Configuration screen appears. As the Configuration Wizard completes each task, that box is checked in the list.



Note: This process may take up to ten minutes.



When this part of the installation is complete, this screen appears.



- 26 Click **Finish**. A message box appears showing you the location of the EasyADC Console icon in the desktop tray.





Installing the Software (*continued*)

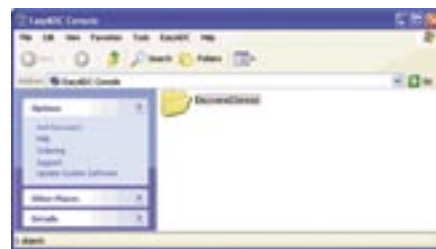
- 27 Click **Next**. The Security Level screen appears.



- 28 Click **OK** to choose a minimum security level for now. You will set the security level later in the installation. A message box appears informing you that the software installation is complete.

- 29 Click **OK**. The EasyADC Main Menu appears.

- 30 Click the icon next to “Exit the Installation.” The EasyADC Console screen appears.



- 31 Close the EasyADC Console and reboot the EasyADC PC. When the reboot is finished, the EasyADC Console screen appears.
- 32 Get the LabelShop PRO envelope from the Accessories box and take the LabelShop key from the envelope.
- 33 Plug the LabelShop key into an available USB port on the EasyADC PC.

- 34 Double-click the Great Plains icon on the desktop of the EasyADC PC. Microsoft Great Plains starts and a login screen appears.



- 35 Enter your Great Plains user ID and password, and then click **OK** twice.

- 36 Double-click the EasyADC Data Collection Manager icon. The Data Collection Manager starts and a login screen appears.



- 37 Enter your username and password and then click **OK**.

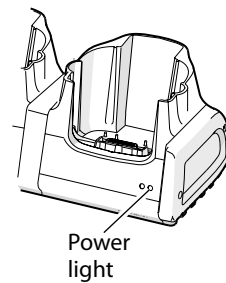
Setting Up the AC2 and CK30s



Note: If you have already unpacked and installed the AC2, begin with Step 5.

- 1 Get the AC2 power supply and the AC power cord from the Accessories box.
- 2 Place the charging dock on a flat, stable, and clean surface that is within 1.5 m (5 ft) of an AC power outlet.
- 3 Connect the power supply to the power connector on the back of the AC2.

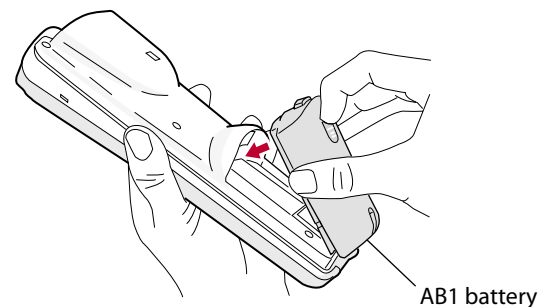
- 4 Connect the power supply to an AC power outlet. The yellow Power light turns on showing that the charging dock is ready to charge.



- 5 Get a CK30 and an AB1 battery from one of the CK30 shipping boxes.

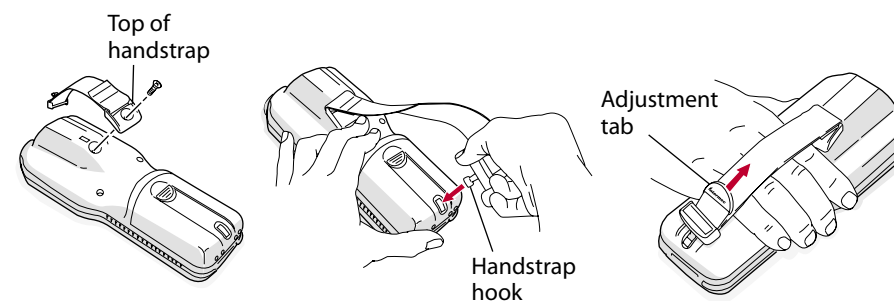
- 6 Insert the tabs on the bottom of the battery into the CK30 and snap the battery into place.

If you want to use the included AL2 handstraps, continue with the next step. If you do not want to install the handstraps, continue with Step 8.

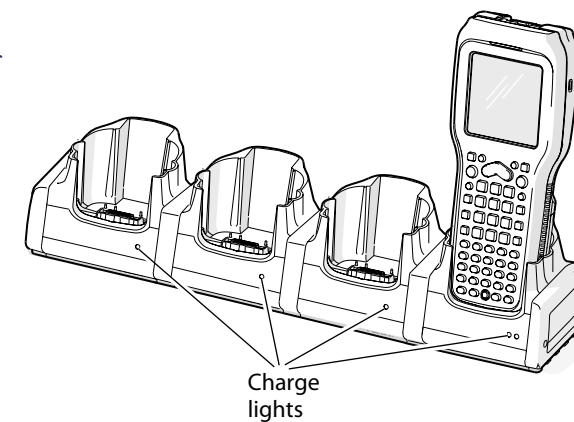


- 7 Get an AL2 handstrap from the Accessories box and follow the instructions in the shipping bag to install the handstrap on the CK30.

You will need to unhook the bottom of the handstrap to remove and install the AB1 battery.



- 8 Slide the CK30 into any of the four bays on top of the charging dock. The Charge light for that bay turns on to indicate the battery charge status. For more information, see the *AC2 Charging Dock Quick Start Guide* that shipped with the dock.

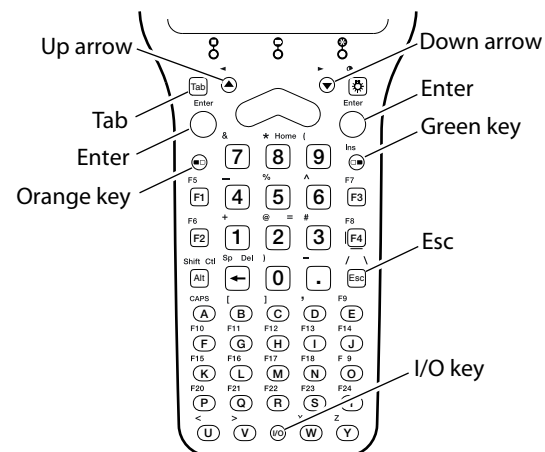


- 9 Repeat Steps 5 through 8 for the other CK30.

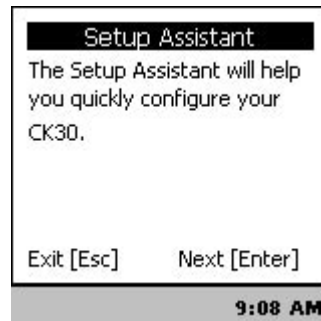
Configuring the CK30s

If the CK30s did not turn on when you installed batteries, press $\frac{1}{2}$ to turn them on. When the CK30s turn on, the Setup Assistant screen appears.

Follow the next procedure to configure the CK30s. Keys you need to press are shown in the illustration below.



- 1 Press **Enter**. The ION Client screen appears.
- 2 Press **▲** to choose Yes, and then press **Enter**. Progress messages appear. When this process is finished, the Setup - Complete screen appears.



- 3 Press **Enter**. After the CK30 reboots, the blue light starts blinking as the CK30 tries to establish contact with the WA22. This will take a few minutes. When contact is established, the EasyADC login screen appears and the blue light stays solid.
- 4 Press **◀▶** and then **◻▶**.
- 5 Press **1** for Configuration Utility.
- 6 Press **3** for Device Settings.
- 7 Press **1** to set the date:
 - a. Press **Enter**.
 - b. Use **Tab** to switch fields and **▲** and **▼** to set the date.
 - c. Press **Enter** and then **Esc** to return to the Device Settings screen.
- 8 Press **2** to set the time:
 - a. Press **Enter**.
 - b. Use **Tab** to switch fields and **▲** and **▼** to set the time.
 - c. Press **Enter** and then **Esc** to return to the Device Settings screen.
- 9 Press **Esc** until you exit the Configuration Utility.
- 10 When prompted to have your settings persist through a cold boot, press **Enter**. The System main menu appears.
- 11 Press **Esc**. The EasyADC login screen appears. You are now ready to login.



Installing the PM4i

1 Unpack the PM4i and its box of printer accessories.

2 Get these items from the Printer Accessories box:

- high edge guide (teal)
- AC power cord

The other items in the Printer Accessories box are described in the user's guide. Set these items aside for now.



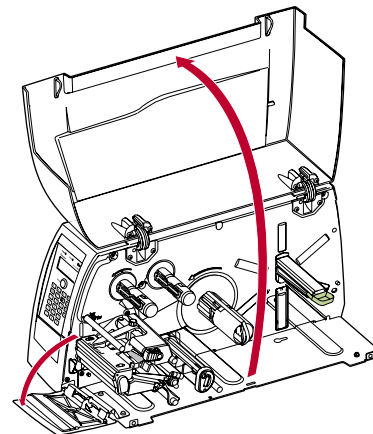
Note: The sample media and ribbon in the printer box are not intended for use with the EasyADC System. Do not use them in this installation.

3 Get the 3.05 m (10 ft) Ethernet cable from the EasyADC Accessories box. Or, get your own Ethernet cable if you need a longer cable run.

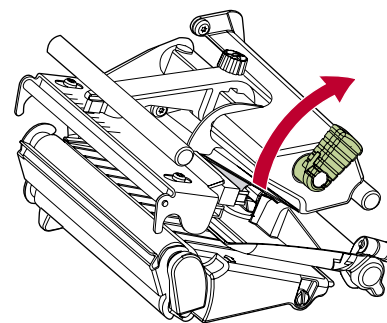
4 Connect the AC power cord to an AC outlet and the back of the PM4i.

5 Connect the Ethernet cable from your network hub or switch to the Ethernet port on the back of the printer.

6 Open the printer front and side doors.



7 Turn the printhead lift lever clockwise to raise the printhead.

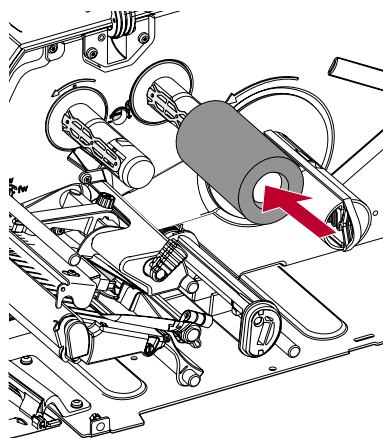


8 Get the roll of thermal transfer ribbon from the EasyADC shipping box.

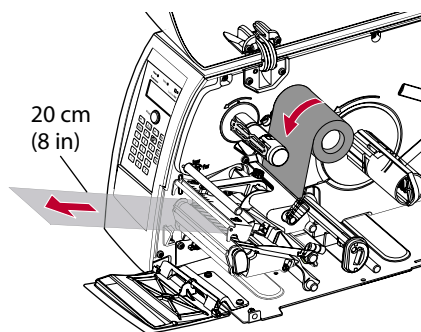


Installing the PM4i (continued)

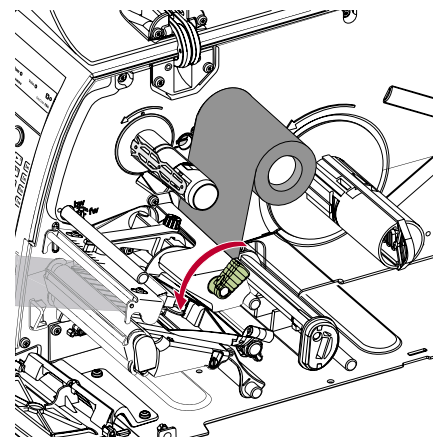
- 9 Remove the wrapper from the ribbon and set the cardboard takeup roll aside.
- 10 Slide the ribbon onto the supply hub so the shiny side faces up when the ribbon is routed through the print mechanism.



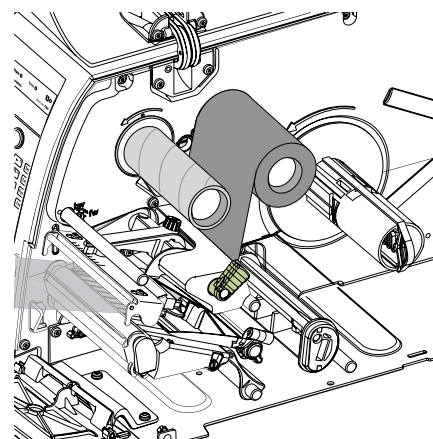
- 11 Route the ribbon through the print mechanism under the transparent upper LSS guide. Pull out about 20 cm (8 in) of ribbon leader.



- 12 Without releasing the ribbon, turn the printhead lift lever clockwise to engage the printhead and lock the ribbon.



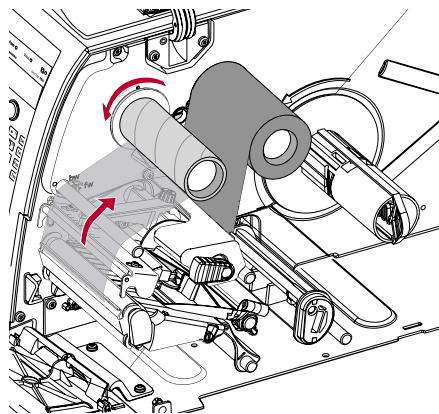
- 13 Slide the cardboard takeup roll onto the ribbon rewind hub.



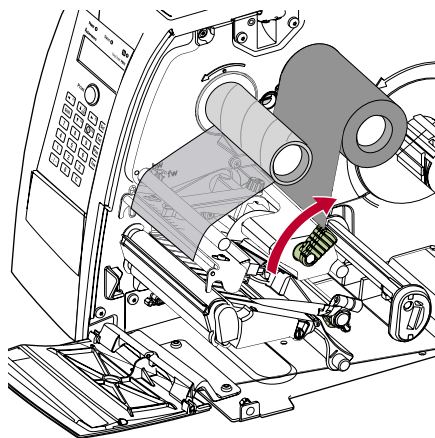


Installing the PM4i (continued)

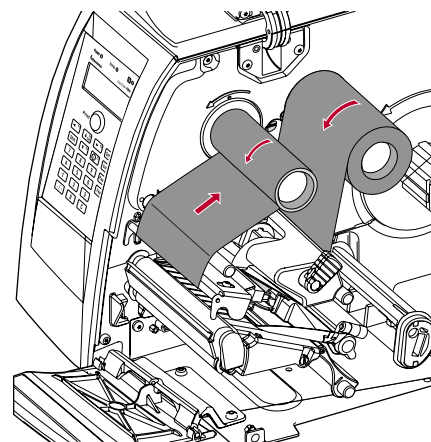
- 14 Bring the end of the ribbon back over the printhead and around the cardboard takeup roll. Press the adhesive end of the ribbon onto the roll, making sure to line up the sides of the ribbon with the edges of the core.



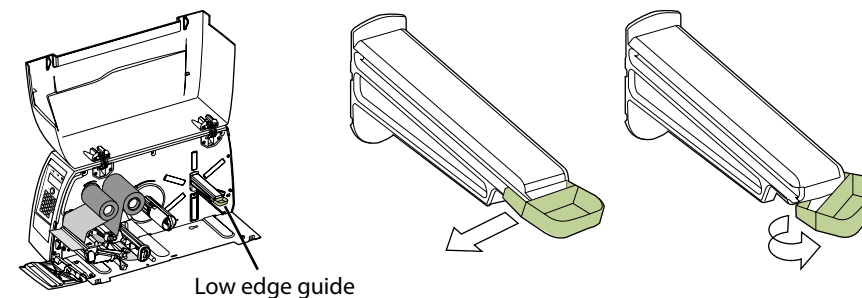
- 15 Turn the printhead lever clockwise to release the ribbon.



- 16 Manually advance the ribbon until all of the metallic leader has passed the printhead and the ribbon becomes tight.



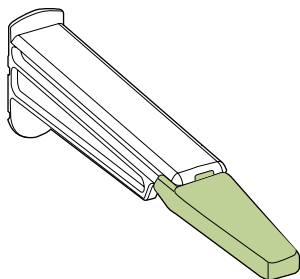
- 17 Remove the installed low edge guide:
- Tilt the low edge guide so it is parallel to the mounting arm.
 - Pull the edge guide toward the front of the printer and unhook the guide by rotating it counterclockwise as seen below.



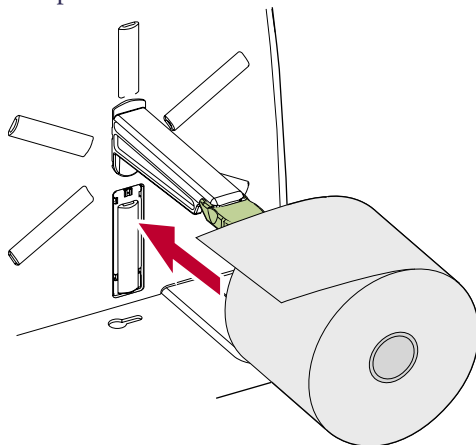


Installing the PM4i (continued)

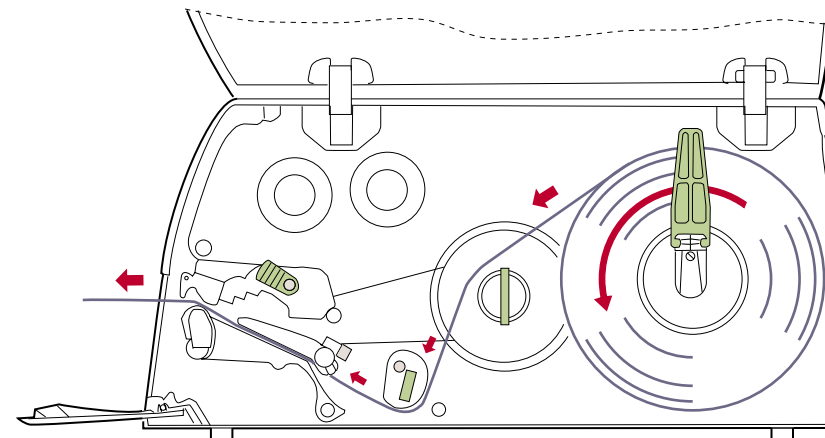
- 18 Install the high edge guide by reversing Step 17. For help, see “Media Supply Roll Post” in Chapter 2 of the *EasyCoder PM4i Bar Code Label Printer User’s Guide*.



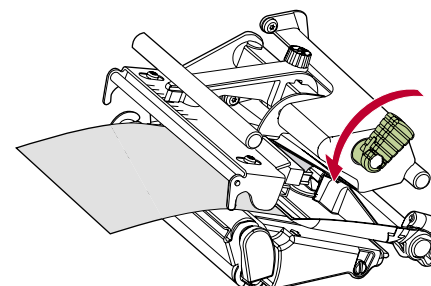
- 19 Get a roll of 4x6-inch media from the EasyADC shipping box.
- 20 Place the roll on the supply post and push it all the way to the bottom of the post.



- 21 Fold up the edge guide and slide it next to the edge of the media roll to hold the roll in place on the supply post.
- 22 Route the media through the print mechanism, keeping the media as close to the middle wall of the printer as possible. The label path shown here is also illustrated inside the printer lid.

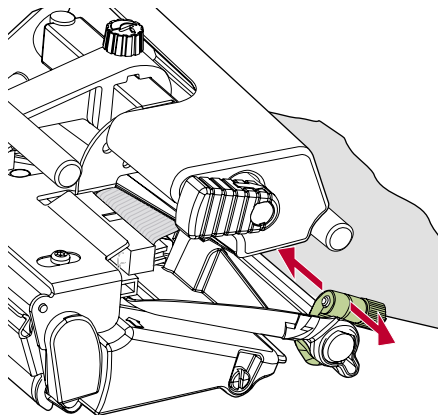


- 23 Turn the printhead lever counterclockwise to engage the printhead.

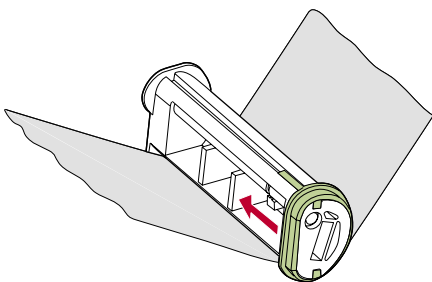


Installing the PM4i (continued)

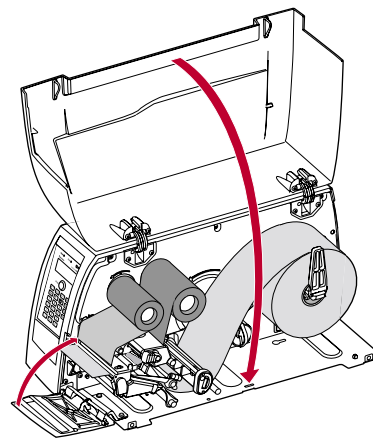
- 24** Adjust the position of the green edge guide so the media is guided with a minimum of play and lock the nut.



- 25** Adjust the position of the edge guide on the label slack absorber according to the width of the media.



- 26** Close the front and side doors, making sure that the media runs through the front door slot.



- 27** Turn on the PM4i. The LCD display on the front of the printer shows initialization messages. When initialization is complete, the EasyADC Console looks for the printer and connects it to the network. When the printer is connected, it pulls the excess ribbon back in and prints a test label. The red error light turns off, and the blue light stays on, indicating that the PM4i has been configured correctly. Skip ahead to Step 7, “Setting Security.”

If the test label does not print and the red error light stays on, there is a problem connecting the printer. Continue with Step 28.

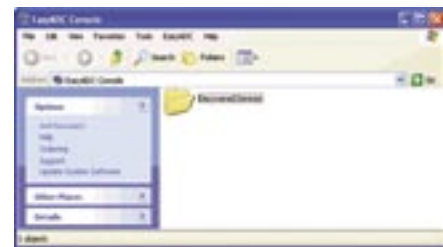
- 28** Double-click the EasyADC Console icon on the taskbar.



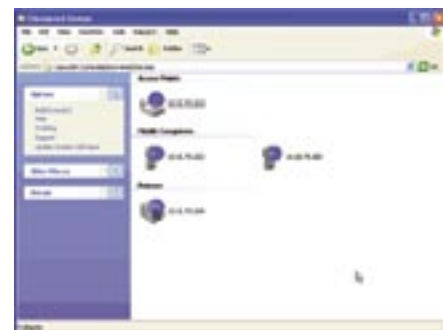


Installing the PM4i (*continued*)

The EasyADC Console screen appears.



- 29 Double-click the Discovered Devices folder. The Discovered Devices screen appears showing the components of the EasyADC System and their IP addresses.



- 30 Right-click the printer icon and choose **Delete**.
- 31 Right-click the EasyADC Console icon on the taskbar and choose **Configure > Discover**. The Console looks for the printer and connects it to the network. The PM4i pulls the excess ribbon back in and prints a test label. The red error light turns off and the blue light stays on, indicating that the PM4i has been configured and added to the network.
- 32 Right-click the Discovered Devices screen and choose **Refresh**. The printer icon appears.

Setting Security

- 1 Right-click the EasyADC Console icon on the taskbar and choose **Configure > Network > Security**. The EasyADC Security screen appears.



- 2 Click **Max** in the slider to set the security level to maximum, and then click **OK**.

Your installation of the EasyADC System is complete!

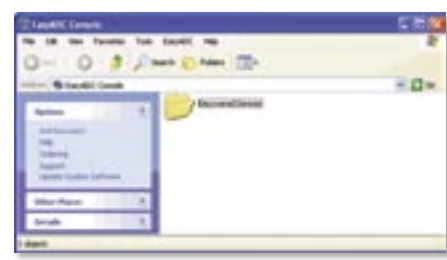
For more information on operating your Intermec hardware products, see the user's manual or quick start guide for that product. Complete manuals for your Intermec products are available as PDF files on the EasyADC CD. On the CD, browse to **Training > Manuals**.

For complete information on configuring, operating, maintaining, and troubleshooting the software components of your system, see the *EasyADC System User's Manual*.

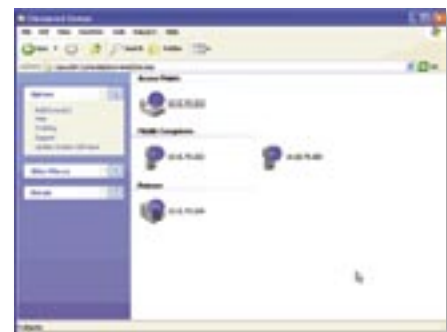
Using the EasyADC Console

Now that your EasyADC System is installed and running, you can use the EasyADC Console to monitor the status of each component in the system.

Right-click the EasyADC Console icon on the taskbar and choose **Explore**. The EasyADC Console main screen appears.



Double-click the Discovered Devices folder. The Discovered Devices screen appears showing each discovered component of the EasyADC System and its IP address.



For more information, see the *EasyADC Online Manual*. In any EasyADC Console screen, choose **EasyADC > Help**.

Uninstalling the System

To uninstall the EasyADC System, you need to restore the default hardware settings for all components and then uninstall the EasyADC software.

Follow this procedure carefully. The CK30s, WA22, and PM4i must be restored to their default conditions before you uninstall the EasyADC software. Uninstalling the software before restoring the hardware defaults may require some components to be returned to Intermec for repair.



Note: Although the Great Plains server and client software are not affected by uninstalling the EasyADC System, be sure you know the name of the Microsoft Great Plains server. You need the server name to install EasyADC again.

- 1 Close these applications on the EasyADC PC: EasyADC Data Collection Manager, LabelShop PRO 6, and the Microsoft Great Plains Client. Do not close the EasyADC Console yet.
- 2 Restore the defaults on each of the CK30s as follows:
 - a. Press **■□** and then **□■**.
 - b. Choose **1** (Configuration Utility) and then choose **6** (Restore Defaults).
 - c. Press **Enter** to select Yes and restore the defaults. The CK30 cold boots. After the cold boot, the Setup Assistant screen appears.
 - d. Press **Y** to turn off the CK30.

- 3 Restore the defaults on the WA22 as follows:
 - a. On the EasyADC PC taskbar, right-click the EasyADC Console icon. Choose **Configure > Network > Reset to Defaults**. The Intermec EasyADC Configuration Wizard screen appears.
 - b. Click **Next**. The wizard warns you that the access point will be reset to factory defaults and prompts you to continue.
 - c. Click **Yes**, and then click **Finish**.
- 4 Restore the defaults on the PM4i as follows:
 - a. Press **Setup** on the PM4i.
 - b. Press the right arrow key until Test/Service appears.
 - c. Press the down arrow key.
 - d. Press the right arrow key until Memory Reset appears.
 - e. Press the down arrow key. All appears.
 - f. Press **Enter** to select the option to reset All memory.
 - g. Press **Setup** to exit the setup menu. The PM4i initializes and resets.
- 5 On the EasyADC PC taskbar, right-click the EasyADC Console icon and choose **Exit**.
- 6 From the **Start** menu, select **Settings > Control Panel > Add or Remove Programs**.

Uninstalling the System (*continued*)

- 7 For each of the following and in this order, select the program name and click the **Remove** button. Follow the prompts to remove each program.
 - a. Avalanche Enabler
 - b. Microsoft .NET Framework
 - c. EasyADC Configuration Wizard
 - d. EasyADC Console
 - e. EasyADC Data Collection Manager
 - f. EasyADC Master Install
 - g. LabelShop PRO 6
- 8 Close the Add or Remove Programs window.
- 9 On the Control Panel screen, double-click **Administrative Tools**.
- 10 Start the **Data Sources (ODBC)** application. The ODBC Data Source Administrator screen appears.
- 11 Select the **System DSN** tab. For each of the following, select the data source name and click the **Remove** button. Follow the prompts to remove each data source.
 - a. Dynamics MDS
 - b. eEnterprise MDS
 - c. MDS_modules



Caution

Caution: Do not remove the Great Plains SQL Server file!

- 12 Close the ODBC Data Source Administrator screen.
- 13 Open **My Computer** on the EasyADC PC and browse to C:\\Program Files.
- 14 Locate the Intermec folder and delete the folder and all its contents.

The EasyADC System is now uninstalled.

For More Information

The EasyADC CD includes training materials and Intermec product documentation. On the CD, browse to Training and double-click EasyADC Trng.EXE. The Getting Started with EasyADC main screen appears.

To see the interactive training materials, click the name of a product and choose an option from the drop-down list.



To view PDF files of the manuals for your system hardware and software, click Reference and choose a manual from the drop-down list.

You may need additional information when working with your EasyADC System. Please visit www.intermec.com to download PDF files of our current manuals. To order printed versions of the Intermec manuals, contact your local Intermec representative or distributor.

Service and Support

See the *EasyADC Service and Support Card* for specific information about maintaining your EasyADC System.

If you need assistance, follow these steps:

- 1 Call 1-800-755-5505.
- 2 Choose Option 2 for Technical Support.
- 3 Choose Option 1 for EasyADC for Microsoft Great Plains Warehouse/Distribution.



6001 36th Avenue West
Everett, WA 98203
U.S.A.

www.intermec.com

© 2004 Intermec Technologies Corp.
All Rights Reserved

EasyADC System Installation Guide



P/N 074830-001