



# Panasonic



Providing the Toughpad FZ-M1 tablet  
accessories you need to get the job done  
is how we're engineering a better world.

SOLUTIONS FOR BUSINESS

**TOUGHPAD**





## **TOUGHPAD FZ-M1** **Fully-rugged 7" Windows® 8 tablet.**



The Panasonic Toughpad™ FZ-M1 is a fully-rugged, highly configurable, enterprise-class tablet powered by Windows® 8.1 Pro and a 4th generation Intel® Core™ i5 vPro™ processor. As the world's thinnest and lightest rugged 7" Windows® tablet, and with an array of available accessories, it delivers the high performance mission-critical mobile workers depend on for productivity without compromise. Panasonic tests all third party accessories to ensure they meet the same quality and reliability standards our customers expect.

- 4th generation Intel® Core™ i5 vPro™ processor
- User-replaceable battery, optional bridge battery and long life battery
- USB 3.0, optional NFC, Ethernet, serial, SmartCard, magnetic stripe and barcode reader
- Wi-Fi, Bluetooth® and optional dedicated GPS
- 4G LTE multi carrier mobile broadband
- 3-year warranty with business class support



## Toughpad FZ-M1 Accessories from Panasonic

## Accessories



**CF-AA6431US**  
AC adapter



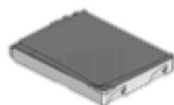
**FZ-VNPM11U**  
Capacitive stylus pen



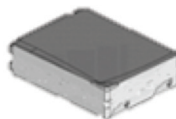
**FZ-VSTM11U**  
Standard hand strap



**FZ-VSTM12U**  
Rotating hand strap



**FZ-VZSU94JS**  
Standard battery pack



**FZ-VZSU95JS**  
Long life battery pack



**FZ-VCBM11U**  
4-bay battery charger (no AC adapter, no AC cable)



**FZ-VEBM12U**  
Cradle (DC-IN, Ethernet, USB 2.0 [2], HDMI, VGA, serial, Kensington cable lock slot, battery charging slot)



**FZ-VEBM11U**  
Lite-function (DC-IN, Ethernet, USB 2.0 [2])

---

## Vehicle Mounting Solutions from Gamber-Johnson and Havis

Available Summer 2014

---

## Bluetooth® Keyboard by iKey



**SL-86-911-TP-USB**  
iKey NEMA 4X (IP67) keyboard, backlit, integrated touchpad, USB cable, black color



## Accessories

### Power Solutions by LIND

- Rugged mobile adapter with highest degree of circuit protection
- Robust design enables use in harsh mobile environments



#### CF-LNDDC80

LIND 80 watt, 12- to 32-volt input car adapter for FZ-M1



- Rugged aluminum case protects against shock and vibration

---

### Barcode Scanning Solutions

- Ideal for POS/retail, field services, healthcare and public safety
- Compact, lightweight and rugged



#### BDF-LP

Baracoda D-Fly 1D barcode scanner—Bluetooth®. IP43 rating



#### BRR-FSBP

Baracoda RoadRunner, full imager, 1D and 2D barcode scanner—Bluetooth®. IP5x rating



#### BRR-LBP

Baracoda RoadRunner, 1D barcode scanner—Bluetooth®. IP5x rating



## Accessories

### Rugged Mobile Printers by Zebra

- Rugged/lightweight receipt and mobile thermal printers
- Ideal for law enforcement (e-citation), delivery of goods, field services
- IP54-rated for harsh environments



#### PZ420BT

Zebra 4" rugged printer RW 420, Bluetooth®, includes belt clip



#### PZ420BTMC

Zebra 4" rugged printer RW 420 with mag stripe reader, Bluetooth®, includes belt clip



#### PZ220BT

Zebra 2" rugged printer RW 220, Bluetooth®, includes belt clip



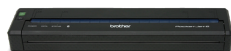
#### PZ220BTMC

Zebra 2" rugged printer RW 220 with mag stripe reader, Bluetooth®, includes belt clip

---

### PocketJet® 6 Series Mobile Printers by Brother

- Full-page, high-resolution text, graphics and pictures
- No inks or toners to clog or replace
- Prints reliably even in extreme heat or cold
- Small footprint—easily adaptable to a variety of vehicles
- Designed for mobile use in vehicles or as true battery-powered devices



PocketJet 6 printer. 203 DPI, 6' USB cable, 14' vehicle wiring adapter, no battery

#### PJ622-SK-506

No Bluetooth® engine

#### PJ662-SK-507

With Bluetooth® engine



PocketJet 6 Plus printer. 300 DPI, 6' USB cable, 14' vehicle wiring adapter, no battery

#### PJ662-SK-508

No Bluetooth® engine

#### PJ662-SK-509

With Bluetooth® engine



PocketJet 6 Plus with Bluetooth® engine. NiMH battery, fanfold case with handle and clip, AC adapter and cable

#### PJ662-SK-504

203 DPI

#### PJ662-SK-505

300 DPI





## Accessories

### RuggedJet™ 6 Series Mobile Printers by Brother

- Print 2" to 4" documents and labels
- IP54 rated—can handle bumps, drops, dust and moisture on the job
- 6-foot drop protection
- USB 2.0, serial
- Lightweight 1.87 lbs.—can be carried comfortably on a belt or shoulder strap



Mobile 4" printer. 203 DPI, 6' USB cable,  
14' vehicle wiring adapter, belt clip

**RJ4030-SK-510**

Bluetooth®, no battery

**RJ4040-SK-512**

Wi-Fi, no battery

**RJ4030-SK-511**

Bluetooth®, Li-Ion battery

**RJ4040-SK-513**

Wi-Fi, Li-Ion battery