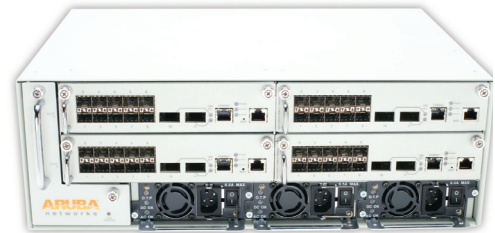




## ARUBA 6000 MOBILITY CONTROLLER

Designed to meet a wide range of mobility, security and management requirements for corporate headquarters and large campus deployments, modular Aruba 6000 Mobility Controllers are easily installed without disrupting the existing wired network.

Core functionality of Aruba 6000 Mobility Controllers is enabled by M3 controller modules, and any combination of supervisor modules can be installed in a single chassis. Aruba 6000 Mobility Controllers support up to 2,048 access points (APs) – 512 per module – in the campus and 4,096 APs – 1,024 per module – when supporting Remote APs (RAPs).



Located in the distribution layer or in the data center, Aruba 6000 Mobility Controllers manage complex and processing-intensive authentication and encryption, virtual private networking (VPN), Layer 2-3 networking, Policy Enforcement Firewall (PEF), Adaptive Radio Management (ARM), and the RFProtect™ Spectrum Analyzer and Wireless Intrusion Protection capabilities.

The wireless LAN configuration is virtualized and implemented in cost-effective 802.11n access points (APs) at the access layer. APs can move user traffic to Aruba 6000 Mobility Controllers through secure IP tunnels over a public or private transport network, and locally bridge at the access layer, depending on the end user application or traffic forwarding requirements set forth by IT administrators.

Clustering and centralized management allow large enterprise networks with hundreds of Mobility Controllers to be managed and maintained with minimal staff. A designated master Mobility Controller manages multiple local Mobility Controllers, while the AirWave Wireless Management Suite provides unprecedented control for IT staff through historical reporting and real-time troubleshooting.

### OPERATING SPECIFICATIONS AND DIMENSIONS

Operating temperature range	0° C to 40° C
Storage temperature range	-40° C to 70° C
Humidity, non-condensing	5% to 95%
Height	5.75" (146 mm)
Width	17.4" (444 mm)
Depth	12.5" (317.5 mm)
Weight	30 lbs. (unboxed)

### CONTROLLER POWER SUPPLY OPTIONS

Power supplies	Up to 3 (N+1 available)
----------------	-------------------------

**HW-PSU-400:** AC power supplies deliver 400 W of power

AC input voltage	85-264 VAC, auto-sensing
AC input frequency	47-63 Hz
AC input current	5 A @ 110 VAC

(HW-PSU-400 required for M3 module or PoE)

### WARRANTY

Hardware	1 year parts/labor*
Software	90 days*

\* Extended with support contract

### REGULATORY AND SAFETY COMPLIANCE

FCC part 15 Class A CE  
 Industry Canada Class A  
 VCCI Class A (Japan)  
 EN 55022 Class A (CISPR 22 Class A), EN 61000-3  
 EN 61000-4-2, EN 61000-4-3, EN 61000-4-4  
 EN 61000-4-5, EN 61000-4-6, EN 61000-4-8  
 EN 61000-4-11, EN 55024, AS/NZS 3548  
 UL 60950, EN60950  
 CAN/CSA 22.2 #60950  
 CE mark, cTUVus, GS, CB, C-tick, Anatel, NOM, MIC, IQC

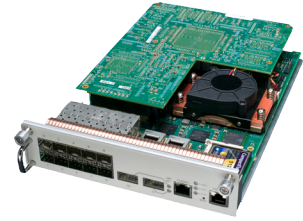
### FEATURES

- Hot-swappable redundant power supplies (N+1 available)
- Hot-swappable fan tray
- Redundant supervisor modules

# ARUBA 6000 MOBILITY CONTROLLER

## Aruba M3 Controller Module

The Aruba M3 Controller Module leads the industry in performance. Designed for the performance needs of 802.11n, the M3 is built on a flexible multi-core processing architecture that makes it adaptable to wireless LAN, remote networking, or network security services.



### PERFORMANCE AND CAPACITY

LAN-connected access points <sup>1</sup>	Up to 512
Remote Access Points <sup>1</sup>	Up to 1,024
Users	Up to 8,192
MAC addresses	64,000
VLAN IP interfaces	1,400
Number of IPv4 unicast routes	2,048
Active firewall sessions	524,300
System BSSIDs	4,096
Concurrent IPSec tunnels	Up to 4,096
Firewall throughput	20 Gbps
Encrypted throughput (3DES)	8 Gbps
Encrypted throughput (AES-CCM)	4 Gbps

### INTERFACES

- 10x Gigabit Ethernet (1000Base-X) SFP
- 2x 10 Gigabit Ethernet (10GBase-X) XFP
- Out-of-band management Ethernet (100Base-T) console (RS-232) RJ-45

### STORAGE

On-board compact flash 512 MB

1 Capacity determined by AP, PEF, and RFP software licenses

### ORDERING INFORMATION

PART NUMBER	DESCRIPTION	PART NUMBER	DESCRIPTION
<u>Base Systems</u>		<u>Accessories</u>	
Base systems are selected by regulatory domain and power supply. Use enhanced (400W) power for SPOE line cards and for the M3 supervisor module. Each base system includes two power supplies.			
6000-400	Aruba 6000 base system, enhanced power, unrestricted regulatory domain	HW-CHAS	Aruba 6000 Series base 4-slot chassis (excludes fan tray), unrestricted regulatory domain
6000-400-US	Aruba 6000 base system, enhanced power, United States regulatory domain	HW-CHAS-US	Aruba 6000 Series base 4-slot chassis (Excludes Fan Tray), United States regulatory domain
6000-400-IL	Aruba 6000 base system, enhanced power, Israel regulatory domain	HW-CHAS-IL	Aruba 6000 Series base 4-slot chassis (excludes fan tray), Israel regulatory domain
<u>Supervisor Modules</u>		HW-PSU-400	Aruba 6000 Series power supply - 400 Watt
M3mk1-128	Aruba M3 Controller Module, 10 x 1000Base-X (SFP), 2x 10 GBase-X (XFP), (128 AP support)	HW-FT	Aruba 6000 Series replacement fan tray
M3mk1	Aruba M3 Controller Module, 10 x 1000Base-X (SFP), 2x 10 GBase-X (XFP), (0 AP support)	HW-SC-LC-BLANK	Aruba 6000 Series Supervisor / line card slot blank panel
<u>Pluggable Ethernet Modules</u>		HW-PSU-BLANK	Aruba 6000 Series power supply unit slot blank panel
SFP-TX	Aruba SFP - 1000Base-T, RJ45	HW-MNT-19	Aruba 6000 Series replacement 19" equipment rack mounting kit
SFP-SX	Aruba SFP - 1000Base-SX, LC Connector		
SFP-LX	Aruba SFP - 1000Base-LX, LC connector		
XFP-SR	Aruba XFP - 850 nm serial pluggable XFP optic (LC), target range 300 m over MMF		
XFP-LR	Aruba XFP - 1310 nm serial pluggable XFP optic (LC) for up to 10 km over SMF		



[WWW.ARUBANETWORKS.COM](http://www.arubanetworks.com) | 1344 Crossman Avenue. Sunnyvale, CA 94089  
 1-866-55-ARUBA | Tel. +1 408.227.4500 | Fax. +1 408.227.4550 | [info@arubanetworks.com](mailto:info@arubanetworks.com)