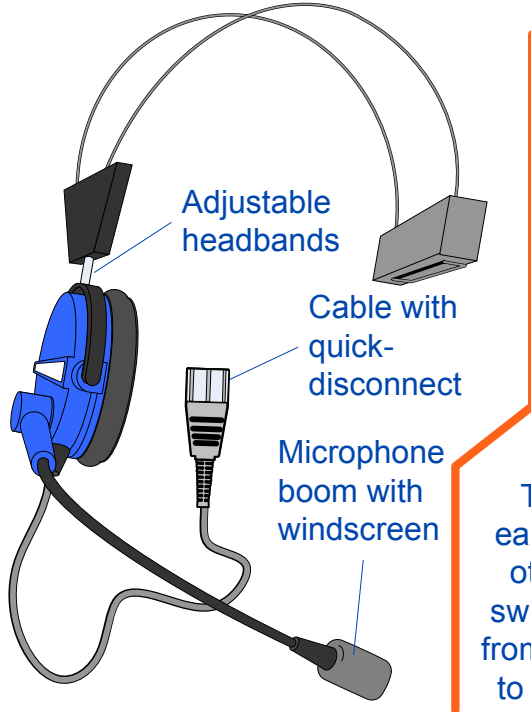


Using the LXE Dual-Band Headset

Part No. HX1502HEADSET

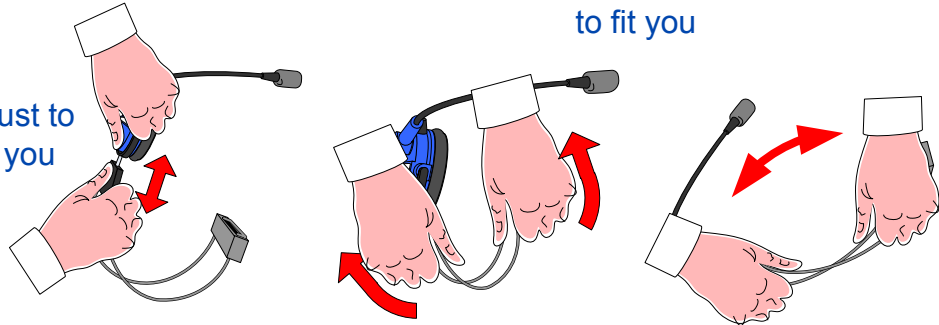
LXE®

1 Adjusting headset to fit you

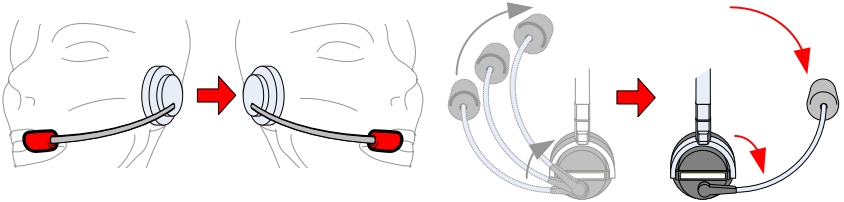


Adjust to fit you

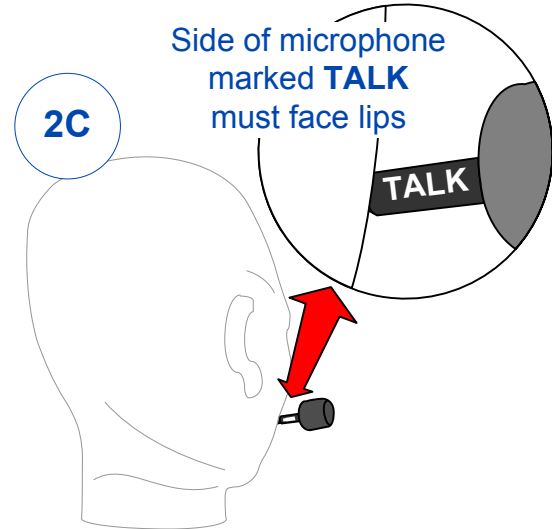
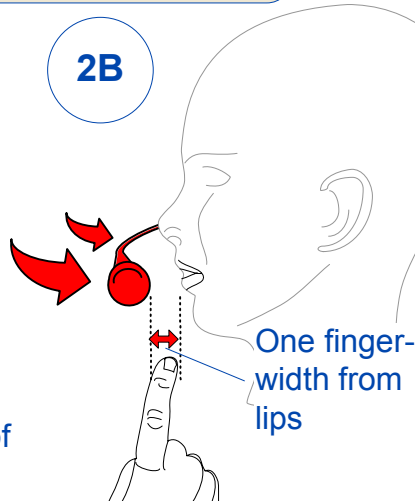
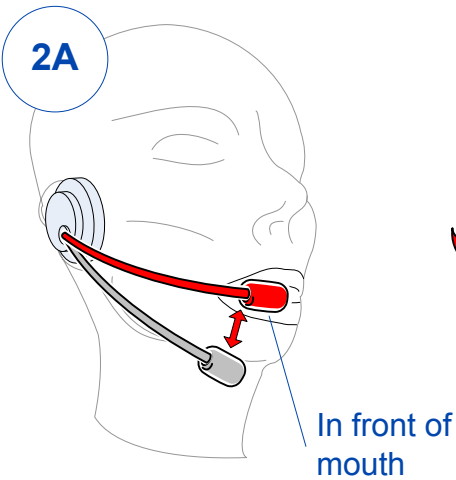
CAREFULLY bend headbands to fit you



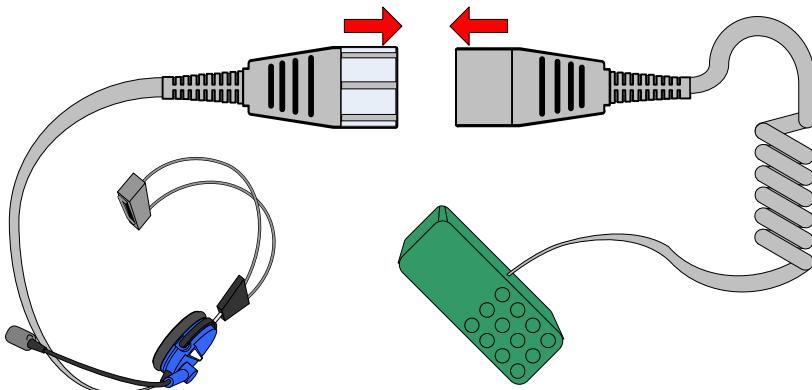
To wear earpiece on other ear, swivel boom from one side to the other



2 Positioning microphone

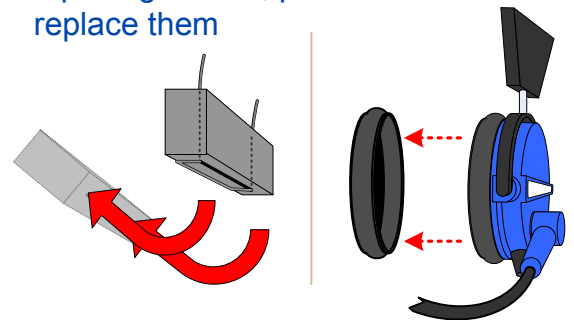


3 Connecting to client unit



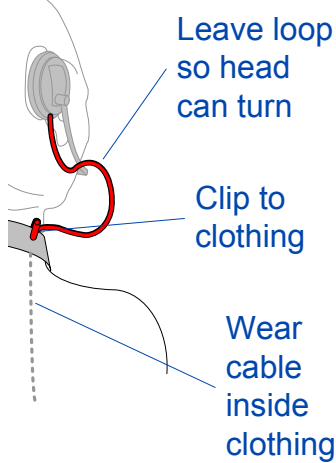
4 Replacing earpiece pads

If pads get worn, pull them off and replace them



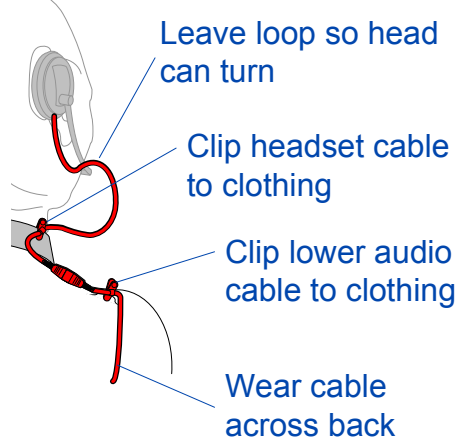
5 Wearing audio cable

UNDER CLOTHING (recommended)



OR

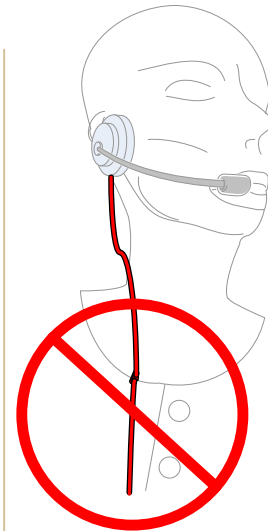
OVER CLOTHING (with cable in back)



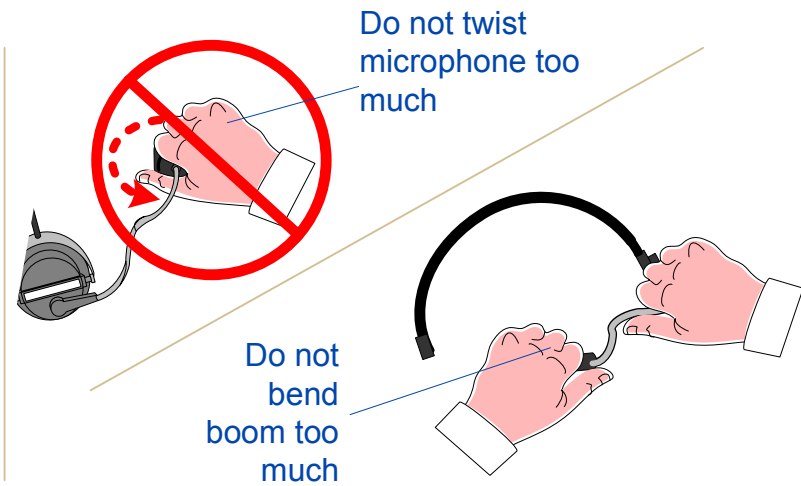
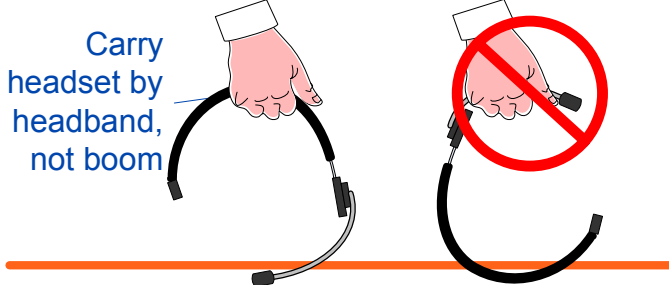
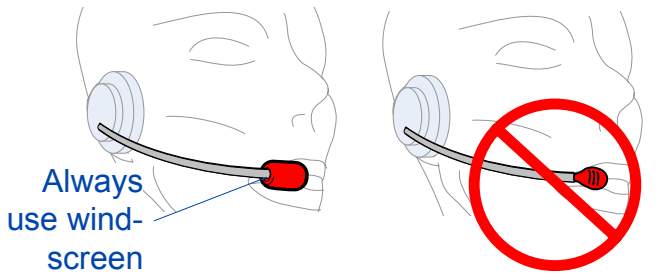
Do not wear cable in front of body



Attach cables securely to clothing so they let you work without restriction and cannot get tangled in something.

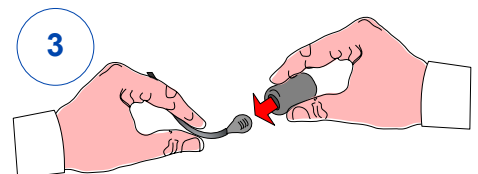
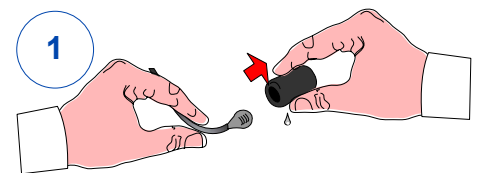
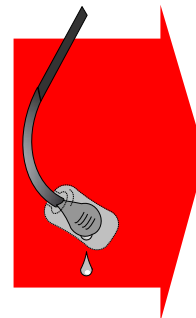
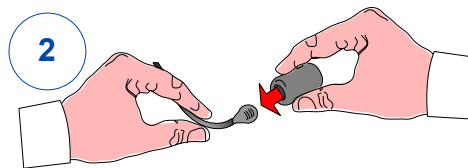
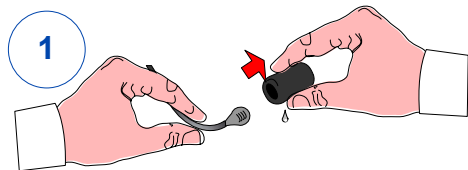
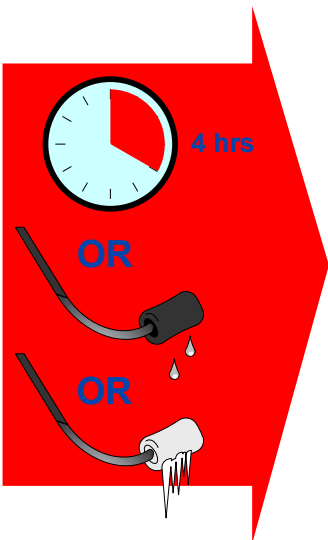


6 Caring for the headset

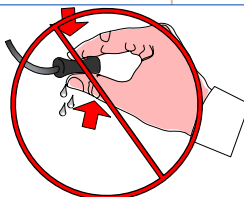


7 In harsh environments

Every four hours, or when windscreen gets moist or frozen, replace windscreen



Do not squeeze wet windscreen while on boom



If the microphone stops working, it might be too wet. Try removing the windscreen, shaking moisture out of the microphone, and replacing the windscreen with a dry one