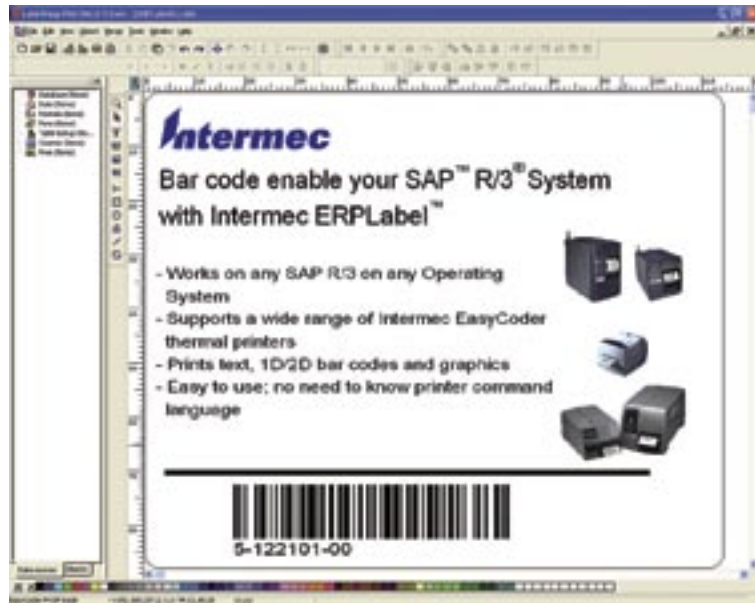


Product Profile

- **“Connect and Print”**
Intermec bar code printers directly to SAP R/3
- No middleware necessary
- No special development required — saves time and money
- Use with any R/3 system independent of Operating System
- Supports local or remote printout
- Design labels with full WYSIWYG
- Print text, graphics, bar codes, lines/boxes
- Wide range of 1-D and 2-D bar code symbologies is supported
- Approved by SAP
- Wizard for easy creation of files for SAP R/3



ERPLabel™ for SAP™ R/3®

ERPLabel from Intermec provides an easy way to bar code enable your SAP R/3 system.

ERPLabel supports a wide range of Intermec EasyCoder printers.

System Integrators and developers will appreciate the easy way to implement bar code printing and the extensive bar code support. This is done without learning printer command language, or making special development, or using bar code libraries or bar code fonts.

ERPLabel is “plug-in” software for Intermec’s LabelShop® PRO, that adds the interface for the R/3 system.

ERPLabel creates label files that are imported into your SAPscript®. These files can be used without any further actions or editing.

It is a simple process to create labels for R/3, with just a few steps:

1. Design the label in LabelShop and store the output file in an SAP specific file format
2. Import the file into the SAPscript report
3. Define the printer in R/3 and print on your EasyCoder® printer

Bar Code Label Designer for SAP™ R/3® with Intermec EasyCoder Printers

Object Types

Text

- Fixed text fields
- Variable text fields
- Concatenated fields; multiple data consisting of variable fields and fixed data
- Selection of font; fixed data–printer font or Windows font; variable data–printer font
- Text properties; alignment, orientation, inverted text.

Bar code

- Fixed bar code fields
- Variable bar code fields
- Concatenated fields; multiple data consisting of variable fields and fixed data
- X-dimension, ratio, orientation (0/90/180/270 degrees), Check digit, Check digit type
- Human readable font: enable/disable, font selection, size, alignment, location

Supported Bar Code Symbolologies

Code 39, Code 39 Full ASCII, Code 93, Code128, UCC/EAN-128, Codabar, Code 11, DUN-14/16, EAN-8, EAN-13, 2 digit supplement, 5 digit supplement, UPC-A, UPC-E, 2/5, 2/5 I, 2/5 Matrix, RSS, 2/5 Industrial, MSI Plessey, MicroPDF 417*, Postnet*, Code16K, Codablock A, Datamatrix*, Maxicode*, PDF417*, QR Code*, EAN, UCC Composite*.

Lines and Boxes

- Line length and thickness
- Box length and width; thickness/ filling

Graphics

- Fixed graphic fields
- Graphical files in following formats are supported: bmp, dib, rle, dxf, eps, fmf, img, jpg, pcd, pcx, dcx, png, tga, wmf, wpg and Windows™ clipboard.

Working Models

ERPLabel can store label formats locally in the printer or in the host system.

Host Stored Label Format

- Some printers can use the host to send the complete label and data. The major advantage is that no application specific data is stored in the printer, so additional printers can be added or moved in the R/3 system without having to prepare the printer.
- True Type fonts can be used for fixed texts and is sent as graphic data.
- Fixed Graphics are sent to the printer at printout.

Printer Stored Label Format

- Can store label formats in printer for optimized throughput. Ideal when using slow communication lines.
- Graphics stored in printer
- True Type fonts can be stored in printer* for use with fixed or variable data.
- Host sends variable data only

Supported Print Methods in SAP R/3

- Local print on the application server (access methods L,C)
- Remote print via lpd host (access method U)
- Remote print over PC and SAPlpd (access method U or S)

SAP Online Support Service Listings

- OSS 137069 describes connection of EasyCoder printers with Direct Protocol and Fingerprint language.
- OSS 183777 describes connection of EasyCoder printers with IPL language.

Supported Printers

EasyCoder E4, F2, F4, 201, 301, 401, 501, 501XP, 601, 601XP, 3240, 3400, 3440, 3600, 4400, 4420, 4440, 4830, 7421, C4**, PF2i, PF4i, PF4ci, PM4i, PX4i, PX6i, PC4** and PC41.

Systems Requirements

ERPLabel

- PC running Windows95/98/Me/NT4/2000/XP
- Hardware requirements–standard for respective operating system
- Intermec LabelShop® PRO v.6.11, single user or network version

SAP R/3

- Release 3.0A or higher on any operating system

* Printer model dependent

** Graphics supported in printer stored label format

R/3 and SAPscript are registered trademarks of SAP AG.

Windows is a registered trademark of Microsoft Corporation.

LabelShop is a registered trademark of Intermec Technologies Corporation.

Intermec
e x p e c t MORE®

North America

Corporate Headquarters
6001 36th Avenue West
Everett, Washington 98203
tel: 425.348.2600
fax: 425.355.9551

550 2nd Street S.E.
Cedar Rapids, Iowa 52401
tel: 319.369.3100
fax: 319.369.3453

Media Supplies
9290 Le Saint Drive
Fairfield, Ohio 45014
tel: 513.874.5882
fax: 513.874.8487

Canada

7065 Tranmere Drive
Mississauga, Ontario
L5S 1M2 Canada
tel: 905.673.9333
fax: 905.673.3974

Europe/ Middle East & Africa Headquarters

Sovereign House
Vastern Road
Reading RG1 8BT
United Kingdom
tel: 44.118.987.9400
fax: 44.118.987.9401

Asia

Asia Regional Office
26-16 International Plaza
10 Anson Road
Singapore 079903
tel: 65.6324.8391
fax: 65.6324.8393

Beijing Representative Office

29 FL, Unit A1, China Merchant Tower
118 Jian Guo Road
Chaoyang District, Beijing 100022
Tel: 86.10.5165.5922
Fax: 86.10.6567.6778

Australia

Level 4, 1-3 Atchison Street
St. Leonards, NSW 2065
Australia
tel: 61.2.9330.4400
fax: 61.2.9437.0204

South America & Mexico

Intermec South America Ltda.
Rua Samuel Morse 120 9 andar
Brooklin CEP04576-060
São Paulo, SP
Brazil
tel: 55.11.5502.6770

Intermec Technologies de Mexico

Av Tamaulipas #141, Primer Piso
Col. Hipodromo Condesa
Mexico, DF, 06140 Mexico
tel: 525.55.241.4800
fax: 525.55.211.8121

Internet

www.intermec.com

Sales

800.347.2636
(toll free in N.A.)
tel: 425.348.2726

Service and Support

800.755.5505
(toll free in N.A.)
tel: 425.356.1799

Copyright © 2005 Intermec Technologies Corporation. All rights reserved. Intermec is a registered trademark of Intermec Technologies Corporation. All other trademarks are the property of their respective owners. Printed in the U.S.A. 609170-01D 09/05

In a continuing effort to improve our products, Intermec Technologies Corporation reserves the right to change specifications and features without prior notice.