



# F5v



## POWERFUL PERFORMANCE FOR PRODUCTIVE MOBILE COMPUTING

Compact. Lightweight. Rugged. The Motion Computing® F5v brings mobile computing to a whole new level. Get the exceptional performance of an Intel® Core™ i7 vPro™ processor and the freedom to work anywhere.

At only **1.5kg<sup>1</sup>**, the Motion® F5v makes it easy to take technology into the field to streamline processes and increase productivity. And now with Intel® Core™ vPro™ technology, the F5v offers new levels of power, security and manageability. With a **50% improvement in performance<sup>2</sup>**, a nearly **30% increase in battery life<sup>2</sup>**, **hot-swap battery feature** and enhanced remote management capabilities, mobile workers are equipped with the ideal mobile computing device for virtually any environment.

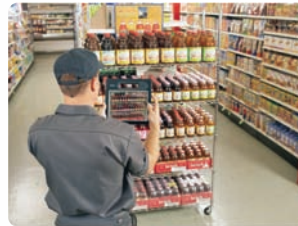
The rugged and portable Motion F5v helps make the most out of every site visit. Capture digital signatures in real time, and access forms and files anywhere with integrated **Gobi™ 2000** or **Wi-Fi®** connectivity. Even track high-value assets, manage inventory and improve documentation with the optional **RFID reader**, **digital camera**, **web camera** and **barcode scanner**.

### WORK-SITE TOUGH

Don't worry. The F5v brought its hard hat. Tested and proven to withstand field-ready conditions such as dust, heat and rain, the Motion F5v is ready to work wherever you're working. The strong internal magnesium frame, shock mounted display and hard disk drive (HDD) or optional solid state drive (SSD) protect against drops and bumps. Fully-sealed, the F5v is protected against the elements and easily cleaned.



Take the F5v with you no matter where your work takes you.



Show proof of work with the integrated point-and-shoot camera.



Easily clean the rugged F5v while working in harsh environments.

The Motion F5v comes standard with **Gorilla™ glass**, offering up to **four times the strength in breakage resistance<sup>3</sup>**, perfect for real-world mobile work environments. Add **180-degree viewing angles**, Hydis AFFS+ LED backlit display and **View Anywhere®** technology for reduced reflectance and glare and you get the best tablet PC viewing experience available for outdoor use. Improved battery life over typical displays and an extremely damage-resistant surface make the Motion F5v tough enough to withstand your work environment and powerful enough to get the job done.



# The F5v packs power and integrated features into a highly mobile, durable design.



## ACCESSORIES TO MEET MOBILITY NEEDS



### Docking Station

Use your F5-Series Tablet PC like a desktop with the full-featured, mountable, desktop docking station. Includes a battery charging bay for keeping multiple batteries charged and ready for deployment in the field.



### Battery Charger

The battery charger charges additional batteries, giving the capability of a full day of performance. The charger's LED indicates battery charge status.

\*Additional batteries sold separately



### EasyConnect

This lightweight add-on provides one USB 2.0 port and one Ethernet 10/100 port enabling added connectivity.



### ClipCarry

This ergonomic carrying solution, designed specifically with your F5-Series Tablet PC in mind, provides alternate methods for carrying and holding the device.



### Mobile Dock

Offering full port replication and charging capability, this powered dock is perfect for the mobile professional.

## KEY BENEFITS AND FEATURES

### LIGHTWEIGHT AND HIGHLY MOBILE

- Only 1.5kg<sup>1</sup> (3.3 lbs)
- Built-in handle
- Hot-swappable battery
- Built-in wireless connectivity

### INDUSTRY-LEADING DISPLAY

- Hydis AFFS+ LED backlit display
- View Anywhere<sup>®</sup> technology
- Gorilla<sup>™</sup> glass durable display

### INTEGRATED FEATURES

- 3.0-Megapixel camera
- Front-facing web camera
- RFID reader
- Barcode scanner

### RUGGED FROM THE INSIDE OUT

- Internal magnesium frame
- Fully sealed and IP54-rated
- Meets MIL-STD-810G
- 64GB SSD (optional)

### POWERFUL YET EFFICIENT

- Intel<sup>®</sup> Core<sup>™</sup> i7 vPro<sup>™</sup> Processor (1.2 GHz) or Intel<sup>®</sup> Core<sup>™</sup> i5 vPro<sup>™</sup> Processor (1.06 GHz)
- Supports Windows<sup>®</sup> 7 and Windows<sup>®</sup> XP
- 1.8" HDD with 160 GB capacity and up to 4GB of RAM
- USB 2.0 port



<sup>1</sup> Represents approximate system weight measured with a 40Whr battery. Actual system weight may vary.

<sup>2</sup> Based on MobileMark<sup>®</sup> 2007 performance testing.

<sup>3</sup> Based on internal Motion strength tests versus standard glass.