



# Wavelink Printer Management

Extend the leading wireless ecosystem management solution to printers



## How does it work?

Delivered via an Avalanche package, Printer Management runs on the selected mobile device and connects directly to the Bluetooth™ printer. Running silently in the background, printer statistics are periodically sent to the Avalanche console. Existing and new applications simply bind to a “virtual COM port” which in turn communicates with the printer. The Print Manager interface controls print jobs and command synchronization.

With Wavelink Avalanche®, administrators can now extend wireless ecosystem management to include printers attached to mobile devices via Bluetooth™.

## Wavelink Printer Management

Wavelink Printer Management, a plug-in to Avalanche, gives administrators new insight and control over Bluetooth™ printers. With Printer Management, administrators have the ability to identify the pairings of mobile devices to printers, enabling personnel to more accurately and easily identify a printer uniquely. For example, administrators can monitor printer utilization allowing better insight to plan for maintenance and thereby minimizing down time. Control and assess printer inventory by getting accurate asset information such as the firmware revision, battery levels, installed flash / RAM, and odometer readings.

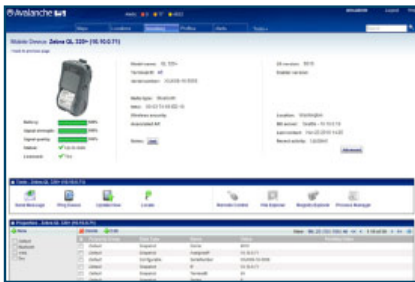
With Printer Management, organizations can reduce confusion over printer identification and create usage reports that determine which printers are used most frequently. Understanding which printers are used most, coupled with Printer Management’s ability to identify which printers are nearing the end of their head life expectancy, gives administrators a new facility to set scheduled maintenance in advance of any problems. Wavelink Printer Management ensures that organizations aren’t affected by unforeseen printer downtime.

## Administration

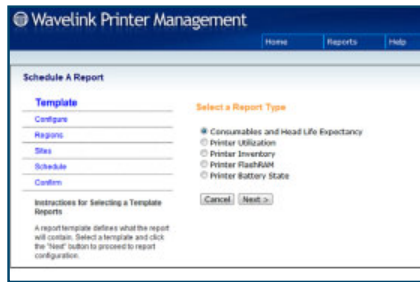
Integrated with the web-based administration console of Avalanche, and using the secure authentication protocols found within Avalanche, users are able to safely access the Printer Management console anywhere.

With a template-based report engine that gives users the power to schedule reports at set times that report on key information, administrators are able to gather critical data such as consumables usage, printer utilization, battery levels and memory statistics. Additional analysis may be performed by exporting to a Microsoft Excel® compatible format. In addition, reports may be displayed in a browser.

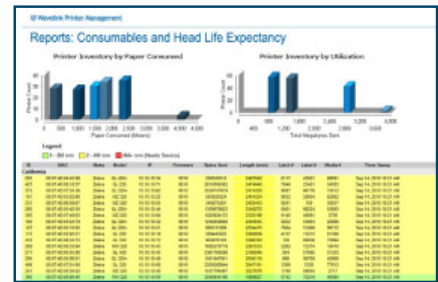
Administrators are also able to pull together information that lists all current printers and their properties together, and have the capability to drill down further if necessary.



Web-based Administration Console

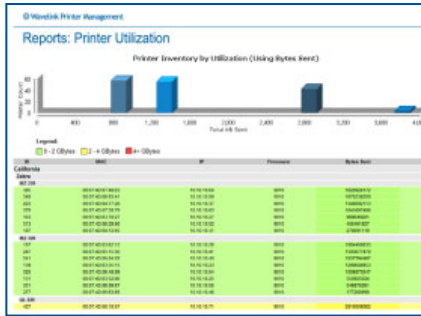


Template and Scheduling Wizard

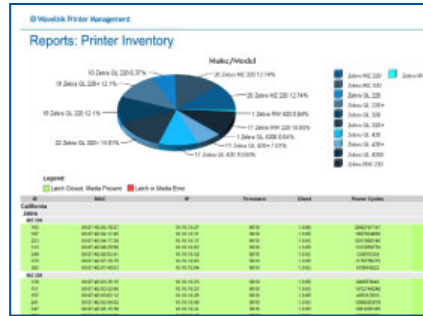


Reporting of Critical Data

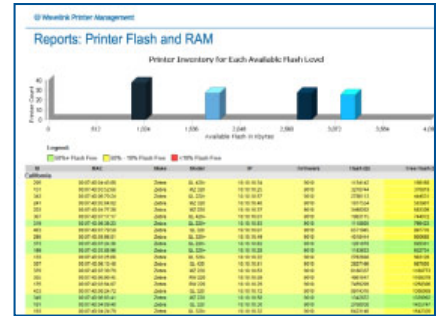




Printer Utilization



Printer Inventory



Printer Flash and RAM

## Key Benefits

- **Reduce printer failures.** Know when your mobile printer is due for service through utilization and historical tracking. Proactive maintenance based upon automated reports reduce the number of printer failures and eliminates unnecessarily early parts replacement.
- **Know what's being used and where.** Administrators will know exactly where consumables are being used the most and get an exact measure of print head usage and life expectancy. With Avalanche Printer Management, departments also develop a new way to audit. Quickly find a printer by identifying which mobile device a printer is paired with.
- **Integrated with Avalanche.** Through its integration with Avalanche's mobile device and wireless infrastructure management, administrators are able to monitor and manage more of the wireless ecosystem. With a full range of tools including device location tracking, software distribution and revision control, and advanced security features such as encryption and authentication protocols, and more.

## The Industry Leader

With more than 9 million active client licenses in the field, Wavelink is the leading provider of multi-vendor mobile device management, wireless infrastructure management, terminal emulation, voice enabling, proactive telecom expense management and mobile application development software. Wavelink technology solves the unique challenges involved in deploying, managing and controlling today's enterprise mobility systems and facilitates peak performance from frontline staff. More than 15,000 companies in retail, manufacturing, healthcare, government, public safety and logistics industries rely on Wavelink to accelerate application delivery, reduce device management and support costs, and tighten network security. Inside the four walls, or in the field, Wavelink leads mobility.

## Wavelink Corporation

USA and Canada: 1-888-697-WAVE (9283)  
Outside USA and Canada: +800 WAVELINK (9283-5465)  
sales@wavelink.com  
www.wavelink.com

## Gamma Solutions Pty Ltd

Offices in Melbourne, Sydney, Brisbane, Adelaide and Perth  
Phone: 1300 GAMMA (1300 042 662)  
www.gamm solutions.com